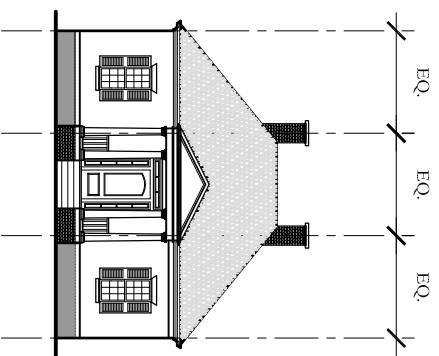
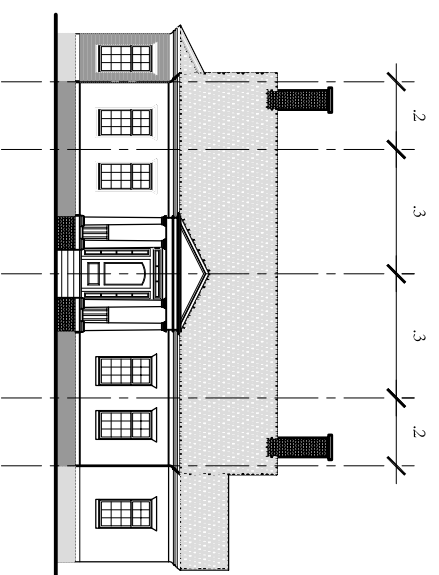


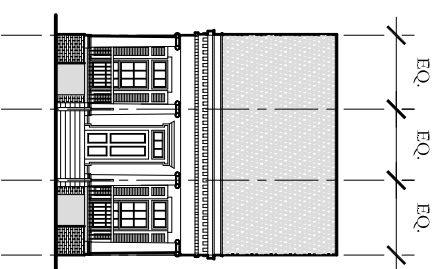
# Elevations



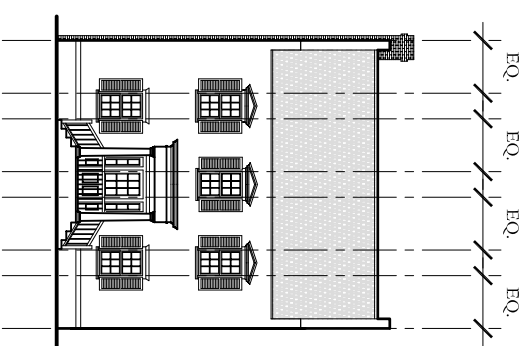
CLASSICAL COTTAGE



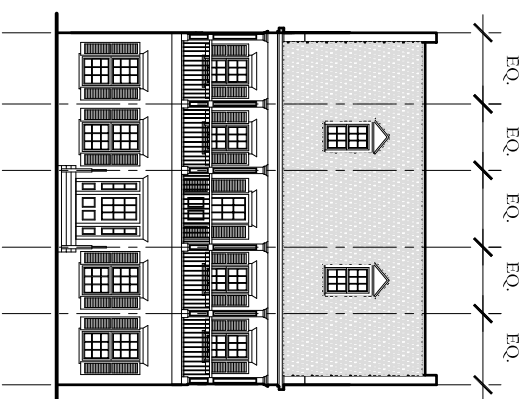
CLASSICAL COTTAGE



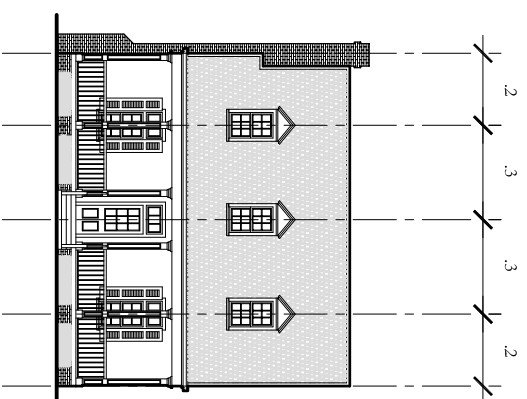
CLASSICAL COTTAGE



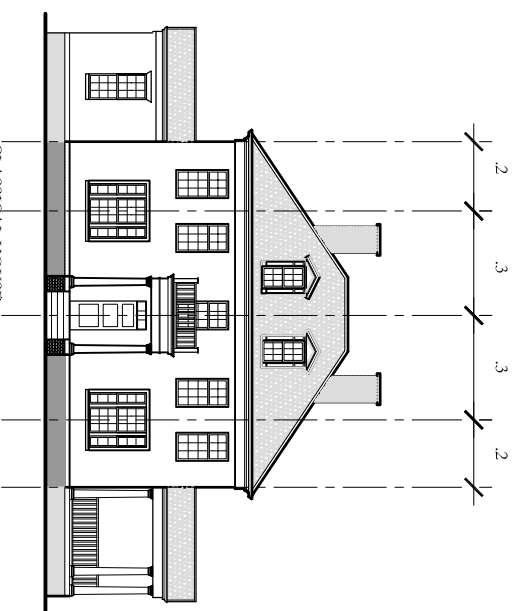
AMERICAN TOWNHOUSE



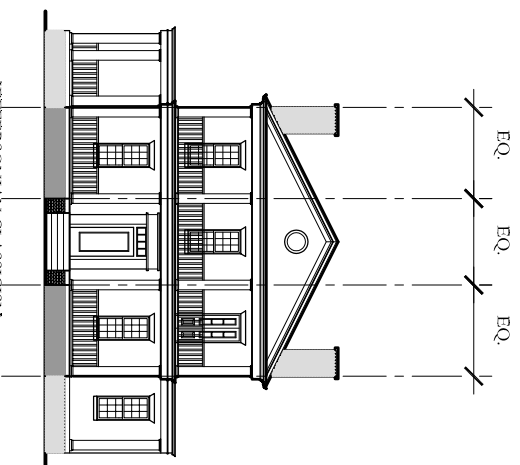
AMERICAN RAISED COTTAGE



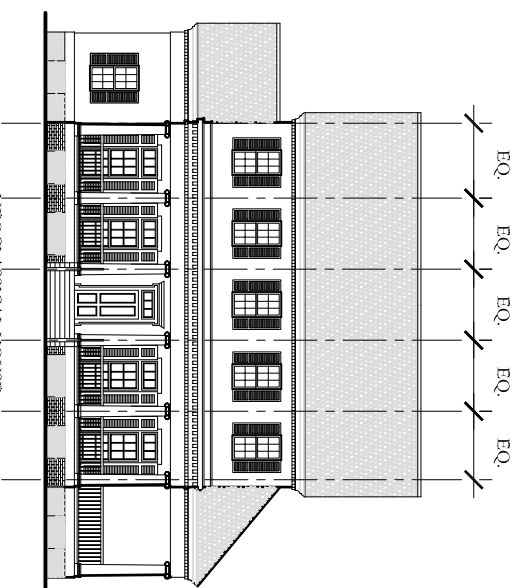
AMERICAN COTTAGE



CLASSICAL HOUSE

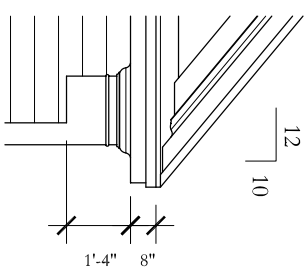


JEFFERSONIAN CLASSICISM



NEOCLASSICAL HOUSE

# Typical Eave



# BASIC MASSING

THE MINIMUM FLOOR TO CEILING HEIGHT REQUIREMENTS CAN BE FOUND IN THE URBAN REGULATION INSTRUCTIONS.

# Typical Section

